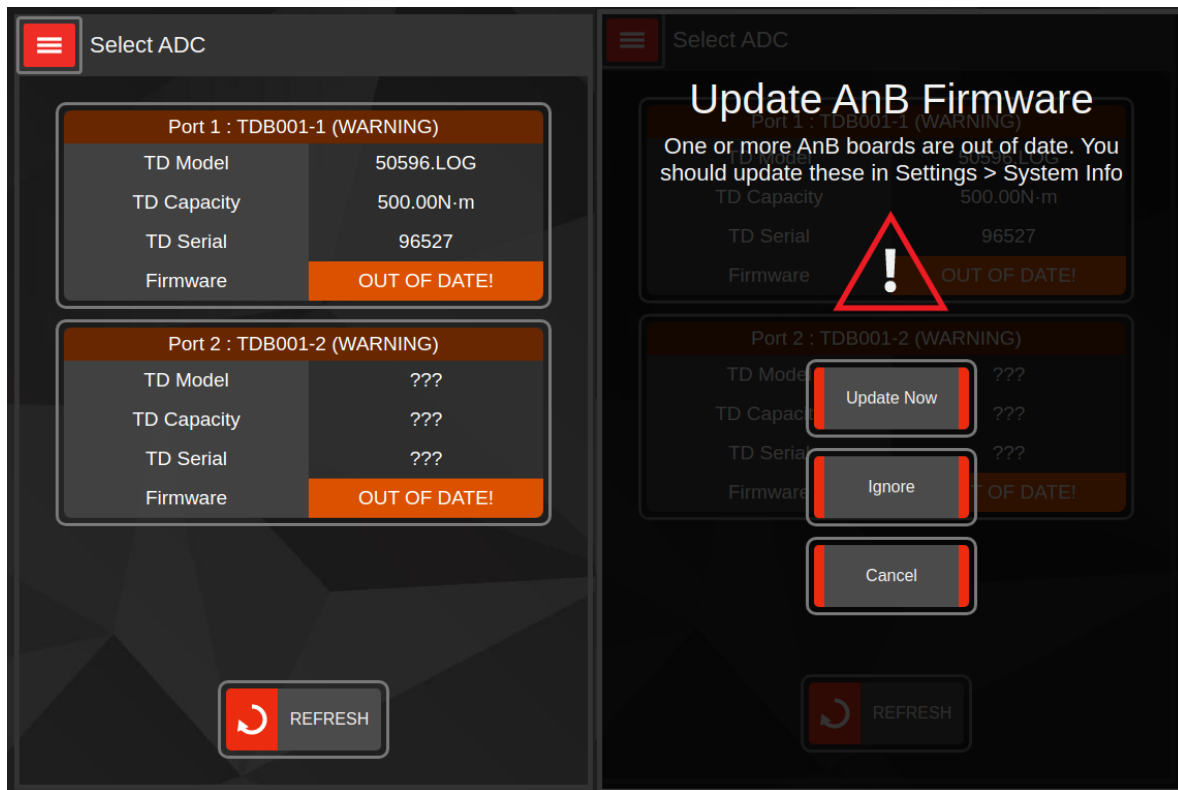


T-Box™ 2 AnB Firmware Update Procedure

Sometimes, when we release a new version of the T-Box™ 2 UI, it also comes packaged with new AnB module firmware. This firmware may contain performance or stability enhancements, or add new features, so it is important to update.

Note:

- **Do not remove the power, turn the T-Box™ 2 off or close the T-Box™ UI (unless instructed) while an AnB update is in progress; this may brick the AnB module.**
- **Do not try to perform other tasks (such as ALT-TABbing to other software) while an AnB update is in progress.**
- The T-Box™ will lock down the UI and force-close any existing tasks before an AnB update starts. **Be sure to close any measurement windows, save any readings and stop and save any graph captures before proceeding.**
- On T-Box™ 2 UI versions prior to 1.0.0.17, there is no notification of outdated firmware. This is to be expected; the launch version of the software is already installed and the AnB firmware already current for that version.
- On post-launch T-Box™ 2 UI versions 1.0.0.17 and upwards, the user is warned if an update is available for one or more of the attached AnB modules and prompted to perform an update (the below pictures show some examples):

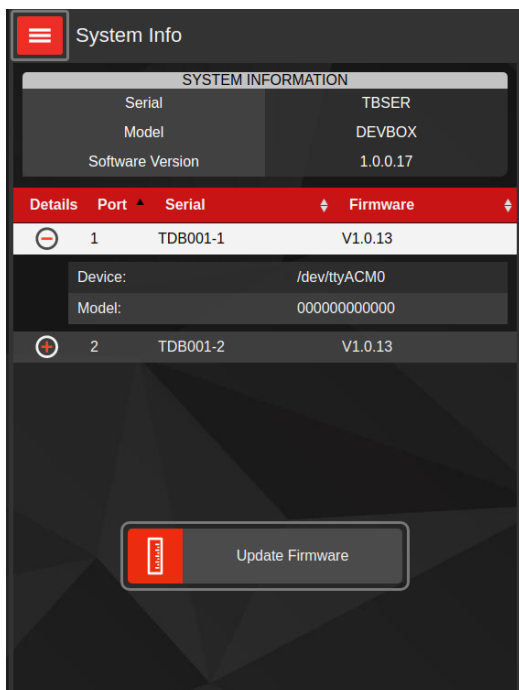


Performing an Update

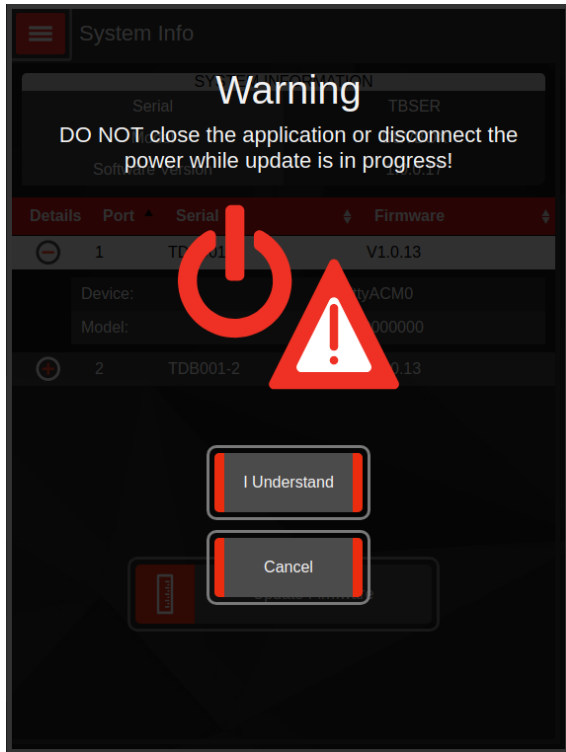
To perform an update we must navigate to the System Info panel. If you see the above “Update AnB Firmware” warning, you can just click “Update Now” to go there. Otherwise, from the main menu, open **SETTINGS** and then **SYSTEM INFO**.



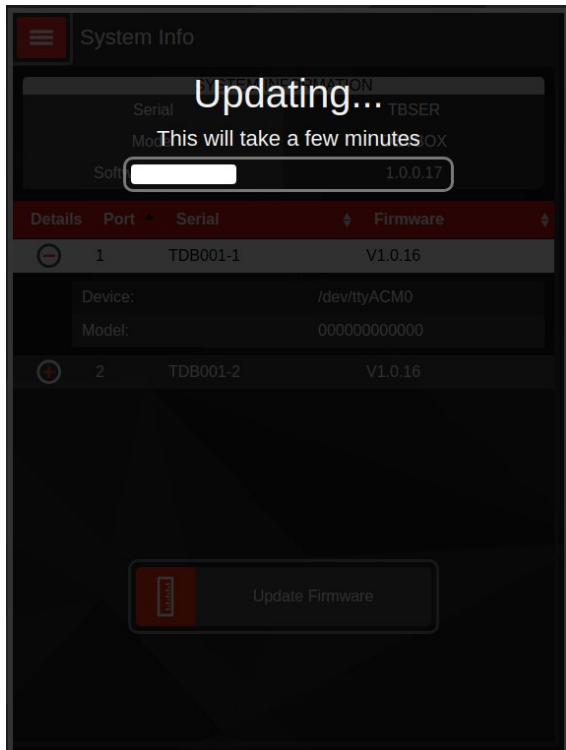
The **SYSTEM INFO** panel shows a summary of the T-Box™ 2 and any attached AnB modules. Select a module to update from the table and tap **Update Firmware**:



You will be presented with a warning before continuing; press **I Understand** to perform the update.



The UI will show a progress bar while the update takes place:



If the progress bar doesn't begin moving after more than twenty seconds: the update has stalled, and the AnB has restarted without applying any updates. In this specific case, it is safe to use the power icon in the bottom-left of the screen to exit the T-Box™ UI. Then, re-open the T-Box™ UI, return to the **SYSTEM INFO** screen and try again.

Once the update is complete, the System Info panel will update to show the new AnB version. If the version number has changed, then it is safe to update the next AnB.

If the update completes but the version number doesn't change: either the UI was unable to reattach to the AnB, or the new firmware was the same as the previously installed version. Close and re-open the T-Box™ UI, and return to the **SYSTEM INFO** screen to check again.

After all AnB boards are updated, close and re-open the T-Box™ UI using the power icon in the bottom-left corner of the screen. The boards should now be shown as having the latest firmware and there should be no warnings about them being outdated.