

# 2R & 2AR Instructions

Part Number: 34436

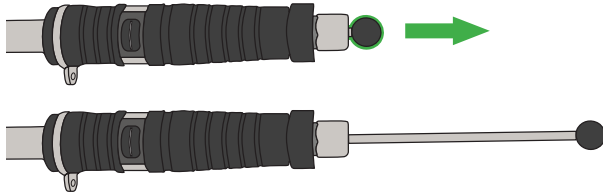
For further instructions please view our 'How to Use an Industrial Torque Wrench' video  
[www.norbar.com/Products/Norbar-Videos/How-to-Use-a-2R-2AR-Industrial-Torque-Wrench](http://www.norbar.com/Products/Norbar-Videos/How-to-Use-a-2R-2AR-Industrial-Torque-Wrench)



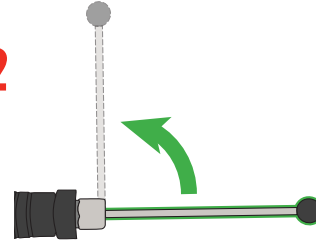
- To set torque
- Réglage du couple
- Einstellen des Drehmomentes

- Impostare la coppia di serraggio
- Para ajustar el par de apriete

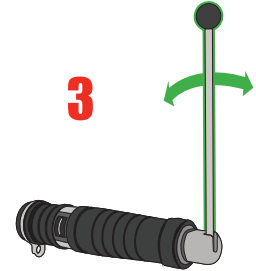
1



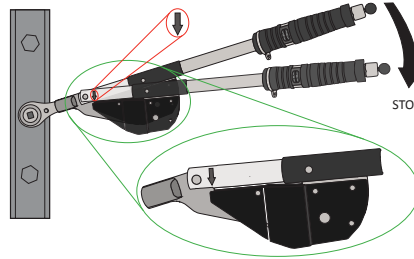
2



3



- Never adjust beyond the marked scale
- Ne jamais régler en-dehors de la zone de l'échelle
- Niemals über den markierten Skalenbereich hinaus einstellen
- Mai regolare la chiave oltre il marchio sulla scala
- No ajustar por debajo de la zona marcada en la escala



- Pull smoothly on the handle in direction indicated by arrow on body tube
- Tirer doucement sur la poignée dans le sens de la flèche sur le tube.
- Drücken Sie langsam auf den Handgriff in die Richtung, welche durch den Pfeil auf dem Rohr angezeigt wird.
- Tirare lentamente sulla manopola nella direzione indicata dalla freccia sul corpo del tubo.
- Tire suavemente del mango en la dirección de la flecha que esta marcada en el tubo

