

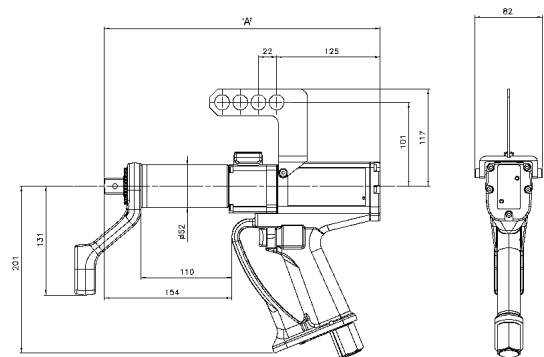
Pneutorque® PTM-52 Series Stall Models

The PTM-52 is engineered to be one of the lightest and fastest tools of its type on the market. The exceptionally compact 52mm diameter gearbox means that the tool is well balanced, light weight and provides excellent access to bolts.



PTM-52-800-B

- Fast – 800 N.m version has a free speed of 148 rpm for rapid bolt run-down.
- Light weight – single direction stall tool weighs just 3.8 kg.
- Quiet – less than 85 dB(A) when under load.
- Non impacting – low vibration levels make these tools comfortable and safe to use.
- Square drive is quickly and easily replaceable.
- On Bi-directional tools, the direction control knob is locked while the tool is running to prevent accidental damage to the gearbox.
- ‘Soft Start’ trigger control aids socket location and allows gradual and safe reaction location.
- For safety, gearbox can rotate independently from the handle so that reaction forces are not transmitted back to the operator.
- 1” square drive available, Part No. 18545.



500 and 800 N.m Tools - Stall

| Model | Direction of Operation | Square Drive | Part No. | Range | | Free Speed † | Length 'A' | Tool Weight | Reaction Weight |
|--------------|------------------------|--------------|-----------|---------|---------|--------------|------------|-------------|-----------------|
| | | | | N.m | lbf.ft | | | | |
| PTM-52-500-F | Forward only | ¾ | 18100.F06 | 100-500 | 74-370 | 224 | 284 | 3.8 | 0.85 |
| PTM-52-500-B | Bi-directional | ¾ | 18100.B06 | 100-500 | 74-370 | 224 | 333 | 4.1 | 0.85 |
| PTM-52-800-F | Forward only | ¾ | 18101.F06 | 160-800 | 118-590 | 148 | 284 | 3.8 | 0.85 |
| PTM-52-800-B | Bi-directional | ¾ | 18101.B06 | 160-800 | 118-590 | 148 | 333 | 4.1 | 0.85 |

† Speed at maximum air pressure.

Pneutorque® PTM-52 Series Internal Control and External Control Models

The integration of electronic torque measurement and control into the PTM-52 Series is achieved with the minimum impact on overall tool size and weight. The actual applied torque is accurately measured at the output of the tool meaning that a repeatability of $\pm 2\%$ can be guaranteed.

Shut-Off, Internal Control – these tools include a torque transducer, easy to read LED display, control panel and a solenoid valve to shut off the air supply once the desired torque has been reached. The tolerance band within which the bolt must be tightened can be set on the tool handle control panel. When the tool is operated, the actual applied torque is displayed along with one of three coloured LEDs to indicate a low, within tolerance or high result. The tool can be operated in either N.m or lbf.ft.

Shut-Off, External Control – this version of the PTM-52 incorporates a transducer, solenoid valve and three coloured LEDs for the indication of low, within tolerance or high results. However, all control functions and torque display are housed in an external controller unit (purchased separately). External controllers can give a much greater range of functionality than is possible on the 'Internal Control' version of the tool.



Tool controller in wall box for external control versions.
Part No. 60244 without printer or 60254 with printer.
Cable for use with PTM tools, Part No. 61127.600.

PTM-52-800-B-IC

500 and 800 N.m Tools - Shut-Off, Internal

| Model | Direction of Operation | Square Drive | Part No. | Range | | Free Speed † | Length 'A' | Tool Weight | Reaction Weight |
|-----------------|------------------------|---------------|-----------|---------|---------|--------------|------------|-------------|-----------------|
| | | in | | N.m | lbf.ft | rpm | mm | kg | kg |
| PTM-52-500-B-IC | Bi-directional | $\frac{3}{4}$ | 18110.B06 | 100-500 | 74-370 | 224 | 397 | 4.9 | 0.85 |
| PTM-52-800-B-IC | Bi-directional | $\frac{3}{4}$ | 18111.B06 | 160-800 | 118-590 | 148 | 397 | 4.9 | 0.85 |

500 and 800 N.m Tools - Shut-Off, External

| Model | Direction of Operation | Square Drive | Part No. | Range | | Free Speed † | Length 'A' | Tool Weight | Reaction Weight |
|-----------------|------------------------|---------------|-----------|---------|---------|--------------|------------|-------------|-----------------|
| | | in | | N.m | lbf.ft | rpm | mm | kg | kg |
| PTM-52-500-B-EC | Bi-directional | $\frac{3}{4}$ | 18120.B06 | 100-500 | 74-370 | 224 | 397 | 4.9 | 0.85 |
| PTM-52-800-B-EC | Bi-directional | $\frac{3}{4}$ | 18121.B06 | 160-800 | 118-590 | 148 | 397 | 4.9 | 0.85 |

† Speed at maximum air pressure.