

ENGINEER TO ORDER

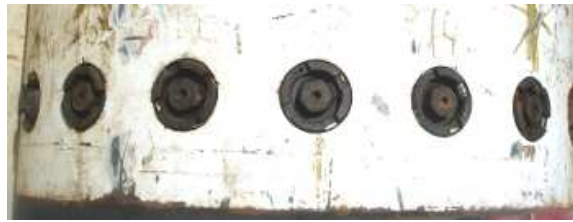
SPECIAL PROJECT INFORMATION SHEET



Project Description	Cranked Sliding Torque Reaction		
Date created	3 January 2012	Project Number	Q1427.01

INTRODUCTION & APPLICATION

Oil & gas industry torque tightening of radially displaced connectors.



SOLUTION

Pneutorque fitted with a special cranked sliding torque reaction.
Torque reaction is taken from the connector adjacent to that being tightened.



TECHNICAL SPECIFICATION / DATA HIGHLIGHTS

The torque reaction has a sliding slave socket with $\varnothing 45\text{mm}$ bore.
3,000 N.m maximum application torque.