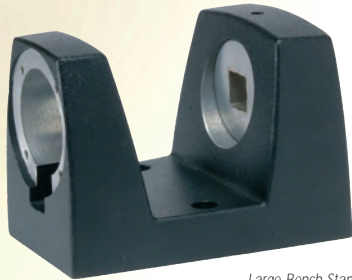


Bench Stands

- Ensures the correct mounting of Norbar's Static Torque Transducers up to 5000 N.m (5000 lbf.ft).
- All bench stands (except Extra Large) are machined to accept Norbar Joint Simulation Rundown Assemblies for power tool testing and calibration.
- For transducers in the range 1 N.m to 10 N.m (100 ozf.in to 100 lbf.in), Torque Limiting Bench stands are available. These are designed to prevent transducer over-load.
- All 'Small Frame Size' Bench Stands can be mounted horizontally or vertically.



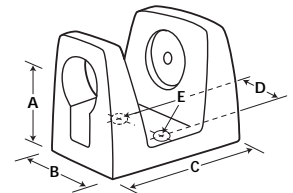
Large Bench Stand



Extra Large Bench Stand

Transducer Bench Stands

Part No.	Model Description	Sq. Drive	Dimensions (mm)				
		in	A	B	C	D	E Ø
60210	Torque Limiting (set to 1.6 N.m)	¼	50	65	96	56	8.5
60211	Torque Limiting (set to 8.1 N.m)	¼	50	65	96	56	8.5
60212	Torque Limiting (set to 16 N.m)	¼	50	65	96	56	8.5
50211	Small Frame Size (10 N.m)	¼	50	65	96	56	8.5
50212	Small Frame Size (50 N.m)	¾	50	65	96	56	8.5
50213	Small Frame Size (100 N.m)	½	50	65	96	56	8.5
50220	Large Frame Size (500 N.m)	¾	70	87	150	79	13.5
50221	Large Frame Size (1000 N.m)	1	70	87	150	79	13.5
50127	Extra Large Size (5000 N.m)	1½	105	280	152	240	16.5



Transducer Leads

Part No.	Description	For use with
60152.225	ETS to 6 way transducer	Post 1994 ETS and 5 way Switch Box Model 60163
51067.225	ETS to 6 way transducer	Pre 1994 ETS and 5 Way Switch Box Model 60055
60217.200	Pro-Log, TST & TTT to 6 way transducer	All 'Smart' Static and Annular transducers
60216.200	Pro-Log, TST & TTT to 10 way transducer	All Rotary transducers with .IND or .LOG Part No. suffix
60223.200	Pro-Log, TST & TTT to no connector	Non Norbar transducers
60225.200	6 way transducer to no connector	Norbar 6 way connector to a non Norbar instrument
60224.200	10 way to no connector	Norbar Rotary transducer to a non Norbar instrument



The Part No. suffix indicates the length of the cable, ie. .225 is 225cm (2.25m). Other cable lengths available on request. Please use suffix to indicate required length (preferably in whole meter increments).