

NORBAR TORQUE TOOLS API CLASS VERIFICATION KITS



API CLASS 2 - 4 KIT

Torque capacity: 3,000 N•m

Kit includes: IP65/67 rated HE Display Instrument, IP65/67 rated HE Torque Transducer (1.5" Sq. Dr). Verification Pot, UKAS accredited calibration to BS7882 and a Peli Transportation Case.

API CLASS 6 KIT

Torque capacity: 15,000 N•m

Kit includes: IP65/67 rated HE Display Instrument, IP65/67 rated HE Torque Transducer (2.625" Sq. Dr). Verification Pot, UKAS accredited calibration to BS7882 and a Peli Transportation Case.

API CLASS 5 KIT

Torque capacity: 7,000 N•m

Kit includes: IP65/67 rated HE Display Instrument, IP65/67 rated HE Torque Transducer (2.0" Sq. Dr). Verification Pot, UKAS accredited calibration to BS7882 and a Peli Transportation Case.

API CLASS 7 KIT

Torque capacity: 40,000 N•m

Kit includes: IP65/67 rated HE Display Instrument, IP65/67 rated HE Torque Transducer (3.5" Sq. Dr). Verification Pot, UKAS accredited calibration to BS7882 and a Peli Transportation Case.

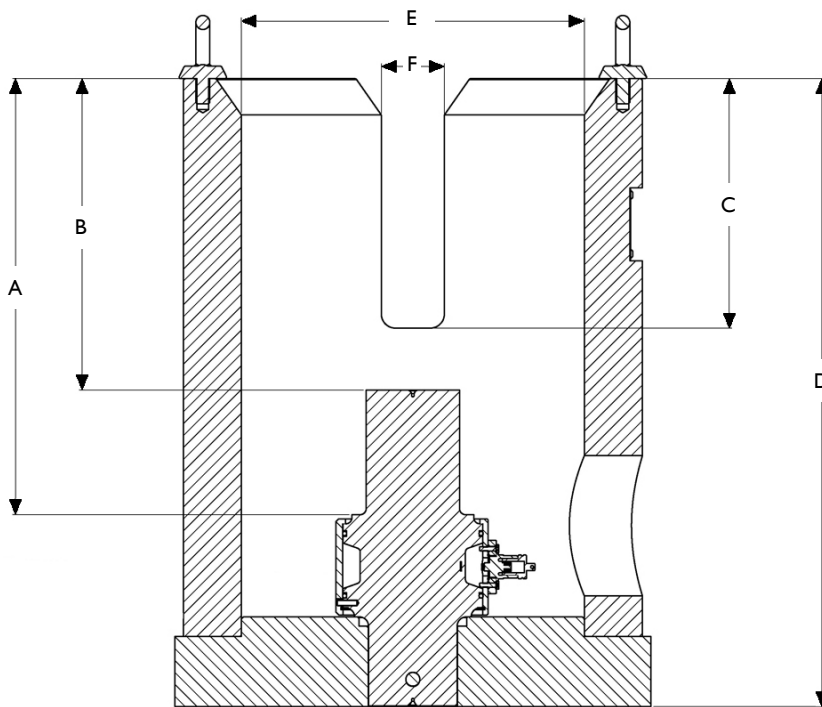
All units are supplied with fully traceable bi-directional UKAS accredited calibration certificate, within guaranteed accuracies of +/-1% reading over the primary range (20-100%).

NORBAR TORQUE TOOLS API CLASS VERIFICATION KITS



API CLASS VERIFICATION KITS

Class	Torque Range	Dimensions (mm)						Square Drive
		A	B	C	D	E	F	
2-4	3000 N·m	192	144	93	312	154	32	1.5"
5	7000 N·m	208	141	127	342	191	38	2.0"
6	15000 N·m	311	222	178	448	245	45	2,625"
7	40000 N·m	242	156	178	428	245	45	3.5"



Norbar is the only torque equipment manufacturer able to offer tool and instrument recalibration services to the original factory standard on four continents. The accredited laboratories in Australia, USA and Singapore use the same equipment and procedures as the factory's UKAS accredited laboratory in the UK. A further Norbar laboratory is in operation in Shanghai.



NATA Accredited Laboratory
Number: 3500









NVLAP Lab Code 200596-0



Calibration Laboratory
2054



ACCREDITED
LABORATORY
SAC-SINGLAS
Cert No: LC-2009-0322-0

-  NORBAR TORQUE TOOLS LTD
-  NORBAR TORQUE TOOLS PTY LTD
-  NORBAR TORQUE TOOLS INC.
-  NORBAR TORQUE TOOLS (NZ) LTD
-  NORBAR TORQUE TOOLS PTE LTD
-  NORBAR TORQUE TOOLS (SHANGHAI) LTD

United Kingdom

Email: enquiry@norbar.com

Australia

Email: enquiry@norbar.com.au

USA

Email: inquiry@norbar.us

New Zealand

Email: nz@norbar.com.au

Singapore

Email: singapore@norbar.com.au

China

Email: sales@norbar.com.cn

For further information on Norbar's Subsea and
Top Side Torque Equipment visit: www.norbar.com

www.norbar.com